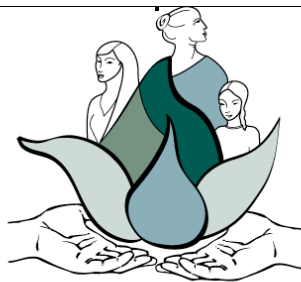


Contact: Trina Fischer  
PR & Marketing Director  
Phone: 347-228-6438  
[trina@lookingforlilith.org](mailto:trina@lookingforlilith.org)

FOR IMMEDIATE RELEASE



LOOKING FOR LILITH  
Theatre Company

## Looking for Lilith Theatre Announces Ambitious 2010-2011 Season Plans

LFL will be touring many of their plays this season, continuing their important educational and community outreach work, as well as presenting many local shows. Local performances include: ***Crossing Mountains: To Teach All We Can and To Learn All We Can*** on Sept. 24th, 7PM at The Rud, and on Friday, Oct. 22nd at Suburban Christian Church, 7515 Westport Road through Ignus Spiritus; ***CHOICES: An Interactive Play On Cyberbullying and Suicide*** on Thursday, Nov. 11th at 7:30PM; ***Fabric, Flames, and Fervor: Girls of the Triangle*** Feb. 25, 26, March 3, 4, 5 at 7:30 PM; a TBA production May 20, 21, 26, 27, 28 at 7:30 PM, and Staged Readings of ***The Midrash Project (working title)*** - dates and location TBA. Unless otherwise specified, all performances are expected to take place at The Rudyard Kipling's Roundtable Theatre at 422 W. Oak Street, but stay posted for any possible updates. Reservations for dinner and show, call 636-1311. Reservations for show only, 638-2559. Tickets will be \$15, \$10 for students and seniors, with group rates available.

To kick off the season, and in preparation to bring ***Crossing Mountains: To Teach All We Can and To Learn All We Can*** to Hindman Settlement School and other Eastern KY locations in October, LFL will have a one night only performance on Friday, September 24th at 7PM. This play celebrates 100 years of education and change in the Kentucky Mountains at the Hindman Settlement School, exploring the many obstacles against which this Appalachian mountain community has had to struggle in order to create exceptional educational and cultural opportunities for the youth and adults of the region. It explores the school's history, its significance to its specific community and its resonance with the entire human community. It was LFL's inaugural play in 2001 and was re-mounted this past March in Louisville. Audiences have described the show as: Excellent, Uplifting, Riveting, Endearing, Beautiful, Moving, Awesome, Enlightening, Sensitive, Stimulating, Thought-Provoking and Splendid.

One of the quickest growing projects of LFL is ***CHOICES: An Interactive Play On Cyberbullying and Suicide***. Based on actual stories of young people, ***CHOICES*** uses Augusto Boal's Theatre of the Oppressed Forum Theatre techniques to get students involved in exploring solutions to these problems. It begins with a 20-minute piece about a teen girl being cyberbullied and brought to the point of choosing to commit suicide. Then the audience, who are "spect-actors", then have the opportunity to review what they have seen and offer interventions to the actors, suggesting different things the characters could have said or done that might have changed the outcome. The actors then improvise those ideas. When appropriate, students are encouraged to replace the actor onstage and try out their ideas themselves. This project is a collaboration between LFL, The Make a Difference for Kids Foundation and the Computer Education Support Unit of Jefferson County Public Schools. Piloted in November 2009, this powerful play has already had many successful performances in high schools and peer leadership groups in 2010. Aimed at high school freshman, this play can be brought to 7th-12th graders, as well as parent groups, churches and other interested parties. There is a short promotional video about this project on the LFL website. The CES Unit of JCPS is sponsoring one performance in each high school in Jefferson County. It is also available by video conference to out of town schools who cannot afford to pay the travel expenses necessary to bring the company to them. By spring semester 2011, they plan to have an upper elementary play on cyberbullying created as well,

aimed at 3rd-6th grades. Also, this Fall, LFL will begin Phase 2, funded by a Kentucky Foundation for Women's Arts and Activism grant, in which they will train high school students to perform the play, with an LFL member there as facilitator, so that this important play can reach more schools and communities. There will be a public performance of **CHOICES** on Thursday, November 11th at 7:30PM.

After successful tour performances this past season and this summer, **Strangers/ Extranjeras**, is booking more dates now. This story of friendship between two very different young women, an optimistic U.S. volunteer and a generous Mayan mother, is based on experiences of volunteering in Guatemala for a year. It will be presented as part of Berea College's Convocations Series on November 18th and may also travel to the Global Girls Event at the Women's Center at University of Illinois Urbana-Champaign.

LFL will also re-mount **Fabric, Flames, and Fervor: Girls of the Triangle** February 25 - March 5th in preparation to take the play to New York City in March for the centennial of the fire on March 25th, 1911. This play honors the tragedy and transformation that was the Triangle Shirtwaist Factory Fire by exploring the lives of the women lost, the ensuing trial and how the labor rights movement was galvanized by this tragedy. Fundraising efforts to bring the play to NYC will be happening this Fall.

May 20-28th, LFL will close out their performance season with a **TBA** work. It is expected to be an already existing scripted work exploring women's experiences. In addition, in spring/summer 2011, they may be doing a Staged Reading of **The Midrash Project (working title)**, which will be a series of short plays done in the tradition of midrash. Midrash, based on the Hebrew for "to investigate," are explorations of Biblical text in which characters, situations, and motivations that are not explicitly mentioned within the scripture are envisioned and expounded upon. Our intention is to imagine what certain Biblical women experienced, based on what we know of the historical context and what we imagine about their emotional and psychological lives in their circumstances. Looking for Lilith Company members will create these original short midrash plays; these will then be brought to churches and other venues either singly or as an entire evening of theatre. This project will likely culminate in a staged reading near the end of this season, and a full production and touring next season.

LFL will also continue offering a wide variety of Community Outreach this season, exploring everything from theatre and acting basics to curriculum-based drama workshops to conflict resolution through drama and creating theatre from one's own life stories. They intend to do residencies in schools, Summer Drama Camps and continue their Faith Stories Project work in Guatemala. LFL continues on the touring rosters of the Kentucky Arts Council, the Kentucky Center for the Arts, Alternate ROOTS and the Southern Arts Federation. For more information and updates on performance dates and venues, call 347-228-6438 or visit [www.lookingforlilith.org](http://www.lookingforlilith.org).

**LOOKING FOR LILITH THEATRE COMPANY** is a not-for-profit, ensemble theatre company, founded in New York City in 2001 by Shannon Woolley and Trina Fischer, both Louisville, Kentucky natives, along with Jennifer Thalman Kepler of Winchester, VA. The mission of this company is to present plays that re-examine history through women's perspectives, mainly via the collaborative creation of original theatre based on research. For more information about Looking for Lilith, visit:

<http://www.lookingforlilith.org/>

<http://www.myspace.com/lookingforlilith>

<http://www.squidworks.org/>

or contact Trina Fischer, PR and Marketing Director,  
at 347-228-6438 or [trina@lookingforlilith.org](mailto:trina@lookingforlilith.org)

###